



WIDEST RANGE OF SOLAR PRODUCT



Celebrating the "Make in India" Initiative

Regd off :

Unit - 1 : Plot no-31 ,Gali no-4 Rajendra Nagar, Industrial Area, Ghaziabad,
Uttar Pradesh 201005

Unit - 2 : 15/260, vasundhara sector-15 Ghaziabad (U.P.)

E-mail : kslighting088@gmail.com

Mob No-9990653060

DEALER/DISTRIBUTOR

PRODUCT CATALOGUE

2022



COMPANY PROFILE



KS LIGHTING has put a step ahead in this competitive industry, with a prime motto of being the leader of this market and the customers' preferred choice. It was established in the year 2016 at Ghaziabad, Uttar Pradesh as a Sole Proprietorship entity. Our firm has started the operation as the manufacturer of Street Light, LED Batten Light, AC Highway Light, AC Driver, Street Light Housing and many more. Quality and total customer satisfaction are always assured by our organization. We have gained remarkable growth and achievements in the industry by executing whole business operations under the guidance of our team members. They are the proprietor of our company, with their measure support and extreme working capacity we have enabled us placing remarkable niche in the industry.

Integrated Solar Street Light System
(All in One)



Two in One Solar Street Light System



Technical Specifications : All in One Solar Street Light System

| Description | | 9W LED | 12W LED | 15W LED |
|---|--|---|---------|--|
| Solar Module | | 40Wp Solar Panel Polycrystalline/Monocrystalline | | |
| LED Light | | 9W LED | 12W LED | 15W LED |
| Battery Capacity | | 12.8V 11AH LiPo4 / Lithium-ion Battery | | 12.8V 15AH LiPo4 / Lithium-ion Battery |
| Motion Sensor | | PIR Motion Sensor(10m Range) | | |
| Lumen Output \Watt | | 120 Lumen / W | | |
| Operation | | Light will glow in full bright mode for first 4 hours, After 4 hours, Light will Dim to 33% Power and motion sensor will activate for detection of motion. If a human motion is detected in 10M area around the light, It will glow in full mode for 2 minutes, After that it will again come to 33% power. | | |
| LED Driver Efficiency | LED Light Operating Voltage Range | Load Cutt-Off Voltage for Battery Deep Discharge Protection | | Space Between pole to pole |
| >93.5% | 11-16V | 11.2 volt ±1 | | 10mtr to 15mtr |
| Pole G.I. Galvanized (5m + 1m) | Light Backup Time Full Night | Net Weight 13Kg Approx | | Product Dimension (L x W x H) 770 x 580 x 145 (mm) |
| Over Charge Protection | Deep discharge protection / Battery reverse Protection | load open & short protection | | Indication on Charging |
| Provided | Provided | Provided | | Green LED Glow |
| Indication on Battery Low Red LED Glow | Indication on Higher Cutt Off Green LED Blinking | Reverse Current Flow protection Provided | | Temperature Compensation Provided |
| Packaging Contents | | Product Warranty | | |
| Integrated light with SPV, Mounting bracket,U-clamp, Nut-bolt | | 2 Years Warranty complete System (Battery warranty 1 Year / **) | | |

Technical Specifications : Two in One Solar Street Light System

| Description | 9W LED | 12 W LED | 15 W LED | 18W LED | 24W LED |
|---|---|----------|----------|---------|---------|
| Voltage | 12V | 12V | 12V | 12V | 12V |
| Solar Module | 40 Wp | 60 Wp | 75 Wp | 100 Wp | 120 Wp |
| LED Light | 9WLED | 12WLED | 15W LED | 18W LED | 24W LED |
| Battery Capacity | 12.8V/ 11.1V 18Ah/ 13.4 Ah LiPo4/Lithium-ion Battery | | | | |
| Motion Sensor | PIR Motion Sensor (10 Range) | | | | |
| Lumen Output /Watt | 120 Lumen/W | | | | |
| Operation | Light will glow in full Bright mode for first 4 hours, Light will Dim to 33% Power and motion Sensor will. Activate for detection of motion. If a motion is detected in 10M area around the Light It will glow in full mode for 2 minutes, After That it again come to 33% Power. | | | | |
| LED Driver Efficiency | >93.5% | | | | |
| LED Light Operating Voltage Range | 11-16V | | | | |
| Load Cutt-Off Voltage For Battery Deep Discharge Protection | 11.2 Volt | | | | |
| Space Between Pole | 10mtr to 15mtr | | | | |
| Pole | G.I. Galvanized (5m+1m) | | | | |
| Light Backup Time | Full Night | | | | |
| Net Weight | 3kg Approx | | | | |
| Product Dimension (LxLxWx) | 420x210x90 (mm) | | | | |
| Over Charge Protection | Provided | | | | |
| Protection Load open & short | Provided | | | | |
| Deep Discharge protection/Battery reverse Protection | Provided | | | | |
| Load open & short Protection | Provided | | | | |
| Indication on Charging | Green LED Glow | | | | |
| Indication on Battery Low | Red LED Glow | | | | |
| Indication on Higher Cat Off | Green LED Blinking | | | | |
| Reverse Current Flow Protection | Provided | | | | |
| Temperature Compensation | Provided | | | | |
| Packaging Contents | Integrated Light with Nut-Bolt | | | | |
| Product Warranty Note : | 2 Year Warranty Complete System (Battery Warranty 5 Year/**) | | | | |

Note : Also available on demand model 18W, 24W, 36W, 56W. , Extra Features street light with camera, remote control, GPS system control, WiFi. ,** More than 2 Years warranty on customers demand.




* Pic & Spec can be changed without prior notice.

Note : Also available on demand model 65W.
Extra Features street light with camera, remote control, GPS system control, WiFi.
** More than 2 Years warranty on customers demand.

* Pic & Spec can be changed without prior notice.



Technical Specifications : Solar Street Light System

| | Technical Specifications : Solar Street Light System | | | | | | | | |
|--|--|--|--------|---------|---------|---------|---|---------|----------|
| | Description | 7W LED | 9W LED | 12W LED | 18W LED | 24W LED | 30W LED | 43W LED | 56W LED |
| | Voltage | 12V | 12V | 12V | 12V | 12V | 12V | 12V | 24V |
| | Charger Type | PWM | PWM | PWM | PWM | PWM | PWM | MPPT | MPPT |
| | Solar Module | 40 Wp | 40 Wp | 75 Wp | 100 Wp | 120 Wp | 150 Wp | 250 Wp | 2x200 Wp |
| | Cell | High efficiency Multi Crystalline silicon cells / Mono Crystalline silicon cells | | | | | | | |
| | Rigidity | Designed to with stand tough environment conditions | | | | | | | |
| | Battery & Battery Box | | | | | | | | |
| | Battery Capacity @ C/10 | 40 Ah | 40 Ah | 75 Ah | 100 Ah | 120 Ah | 150 Ah | 200 Ah | 2x100 Ah |
| | Charging Efficiency | <96% | | | | | | | |
| | Self Discharge | <2% per month at 27°C | | | | | | | |
| | Battery Box Casing | 100% Acid Proof / Polymer Battery Box / GI Metal Box | | | | | | | |
| | LED Luminiare | | | | | | | | |
| | Driver Efficiency | 90% | 91.6% | 90.8% | 90.2% | 90.2% | 93.1% | 94.2% | 94.2% |
| | World Class LEDs | from Japan/Germany | | | | |  | | |
| | Lumen Efficiency / Watt | > 120 Lumen/w | | | | | | | |
| | Rated Lamp Life (Avg.) hrs | More than 50,000 hrs | | | | | | | |
| | IP Class | IP 65 | | | | | | | |
| | Humidity | 95% | | | | | | | |
| | Power Factor | 01 | | | | | | | |
| | Operating Temperature | -15°C to + 80°C | | | | | | | |
| | Dimmer | Programmable (Micro-Controller Based) / Optional | | | | | | | |
| | Autonomy | 3 Days | | | | | | | |
| | Pole & Material Used | (4m + 1m) G.I. Galvanized MS | | | | | | | |
| | Protection | Open Circuit, Short Circuit Protection for Lamp, Over Charge & Deep Discharge Over load, Reverse polarity, Reverse Flow | | | | | | | |
| | Indicators | Green Charging, Red Low Battery | | | | | | | |
| | Product Warranty | 2 Years Warranty complete System / ** | | | | | | | |



Note : Also available on demand model 65W.
Extra Features street light with camera, remote control, GPS system control, WiFi.
** More than 2 Years warranty on customers demand.

* Pic & Spec can be changed without prior notice.

Technical Specifications : Solar High Mast Lights

| Technical Specifications : Solar High Mast Lights | | | | |
|---|--|-----------|---|-----------|
| Description | 72W LED | 96W LED | 120W LED | 144W LED |
| LED Luminaire Type | 4X18W LED | 4X24W LED | 4X30W LED | 4X36W LED |
| Solar PV Module (Power) | 4X100 Wp | 4X125 Wp | 4X200 Wp | 4X225 Wp |
| Battery Capacity @ C/10 | 4X75 AH | 4X100 AH | 4X120 AH | 4X150 AH |
| Pole | G.I. Galvanized MS (7meter) | | G.I. Galvanized MS (7meter + 1 meter) | |
| Voltage | 12V | | | |
| Charging Type | PWM | | | |
| Cell | High efficiency Multi Crystalline silicon cells | | | |
| Rigidity | Designed to with stand tough environment conditions | | | |
| Battery Box | 100% Acid Proof / Polymer Battery Box / Metal Box | | | |
| Charging Efficiency | < 96% | |  | |
| Self Discharge | < 2% per month at 27°C | | | |
| LED Luminiare | | | | |
| Driver Efficiency | 92% | | | |
| World Class LEDs | from Japan/Germany | | | |
| Lumen Efficiency / Watt | > 120 Lumen/w | | | |
| Rated Lamp Life (Avg.) hrs | More than 50,000 hrs | | | |
| IP Class | IP 65/67 | | | |
| Humidity | 95% | | | |
| Power Factor | 01 | | | |
| Operating Temperature | -15°C to + 80°C | | | |
| Dimmer | Programmable (Micro-Controller Based) | | | |
| Autonomy | 3 Days | | | |
| Protection | Open Circuit, Short Circuit Protection for Lamp, Over Charge & Deep Discharge Over load, Reverse polarity, Reverse Flow | | | |
| Indicators | Green Charging, Red Low Battery | | | |
| Product Warranty | 2 Years Warranty complete System / ** | | | |



Note : Also available on demand model 50W.
Extra Features street light with camera, remote control, GPS system control, WiFi.
** More than 2 Years warranty on customers demand.

* Pic & Spec can be changed without prior notice.

AC Led Street Light



Solar Charger Controller



(Normal)
12 to 24 watt



(Frame Type)
25 to 45 watt



(Frame Type L)
50 to 120 watt



Technical Specifications :

| Technical Specifications : | | | | | | | | | |
|----------------------------|--|---------|---------|---|---------|---------|---|---------------|----------|
| Model | GESL-12 | GESL-18 | GESL-25 | GESL-36 | GESL-50 | GESL-60 | GESL-72 | GESL-90 | GESL-120 |
| Power Consumption | 12 Watt | 18 Watt | 25 Watt | 36 Watt | 50 Watt | 60 Watt | 72 Watt | 90 Watt | 120 Watt |
| LDR or Dusk to Dawn | Optional | | | | | | | | |
| Nominal Voltage (V) | 120-270V AC, 50Hz | | | | | | | | |
| Power Factor | ≥.985@240v | | | | | | | | |
| Control Gear | In-built electronic driver with APFC & THD≤10% Output Short-Circuit, Over Voltage, Surge & Phase to Phase Protection | | | | | | | | |
| LED Color Temperature | 5700K-6500K | | | | | | | | |
| Beam Angle | 120° LED Beam Angle | | | 120° LED Beam Angle | | | 120° LED Beam Angle | | |
| Optical Cover | High Efficiency Toughened Glass Cover for Extra Protection | | | | | | | | |
| Lumens Output | ≥110 Lumen / W | | | | | | | | |
| Housing Material | Aluminum Pressure Die Cast ADC 12 Housing (Heat Sink) for better heat transmission | | | | | | | | |
| Dimension | 380mm X 140mm | | | 380mm X 170mm | | | 450mm X 210mm | 470mm X 235mm | |
| Weight | 1.5 Kg. | | | 2.2 Kg. | | | 2.2 Kg. | 2.950 Kg. | |
| Protection Rating | IP 65 | | | | | | | | |
| Mounting & Maintenance | Suitable for side entry mounting with bracket arm ID Ø34mm (max). | | | Suitable for side entry mounting with bracket arm ID Ø45mm (max). | | | Suitable for side entry mounting with bracket arm ID Ø54mm (max). | | |
| Product Warranty | 2 Year / ** | | | | | | | | |

Note : Also available on demand model 150W, 200W.
Extra Features street light with camera, remote control, GPS system control, WiFi.
** More than 2 Years warranty on customers demand.



* Pic & Spec can be changed without prior notice.

Technical Specifications : Solar Charger Controller

| Technical Specifications : Solar Charger Controller | | | | | | |
|---|---|---------|---------|--------------------------|---------|---------|
| Type | GE-CC05 | GE-CC08 | GE-CC10 | GE-CC15 | GE-CC20 | GE-CC40 |
| System Voltage | 12 V | | | 12/24 V Auto Recognition | | |
| Max. Charge / Load Current | 5 A | 8 A | 10 A | 15 A | 20 A | 40 A |
| Efficiency | 97.2% | 97.8% | 98% | | | 98.1% |
| Float Charge | 13.7 V | | | 27.4 V | | |
| Boost Charge | 14.4 V | | | 28.8 V | | |
| Equalization | 14.8 V | | | 29.6 V | | |
| Charging Method | 3 - step (on Demand) | | | | | |
| Reconnect Level | 12.8 V | | | 25.6 V | | |
| Over Voltage Protection | 14.8 V | | | 29.6 V | | |
| Under Voltage Protection | 11.2 V | | | 22.4 V | | |
| Max. Panel Voltage | 22 V in 12 V system | | | 44 V in 24 V system | | |
| Temperature Compensation | -2 to -3 mV / °C / Cell | | | | | |
| Max. Own Compensation | < 4 mA | | < 15 mA | | < 20 mA | |
| Function Indication Type | LED type / Digital Meter (LCD) / Analog Meter / Seven Segment Display Meter | | | | | |
| Grounding | -ve grounding possible | | | | | |
| Ambient Temperature | -15°C to + 80°C | | | | | |
| Max. Height | 4000 m above sea level | | | | | |
| Battery Type | Lead acid (GEL, AGM, Flooded), Li-ion (Optional) | | | | | |
| Weight | 200 gm | | | 900 gm | | |
| Dimension (LxBxH) | 10.5 x 14.5 x 4 (cm) | | | 18 x 18 x 8 (cm) | | |
| Type of Protection | IP 21 | | | | | |
| Fuse | Electronic Fuse Provided | | | | | |
| Mobile charger (Optional) | Plug in Socket (on Demand) | | | | | |
| Mounting type | Suitable for wall Mounting | | | | | |
| Product Warranty | 1 Year / ** | | | | | |

Note : Also available running model 36V/30A | 48V/40A-50A | 72V/50A | 96V/40A-50A-60A | 120V/50A-60A | 144V/50A-60A | 180V/50A-60A | 196V/50A-60A | 360V/80A.
Extra Features CC with GPS system control, WiFi.

** More than 1 Years warranty on customers demand.

* Pic & Spec can be changed without prior notice.



Technical Specifications : Solar Photovoltaic Modules

| Electrical Characteristics | GE-200Wp | GE-200Wp | GE-250Wp | GE-250Wp | GE-250Wp | GE-260Wp | GE-270Wp | GE-280Wp |
|--------------------------------------|---|----------|-----------------|----------|----------|--|----------|----------|
| Peak Power (WP) | 200 | 200 | 250 | 250 | 250 | 260 | 270 | 280 |
| Open Circuit Voltage Voc (V) | 21.60 | 36.6 | 37.38 | 21.6 | 44.64 | 37.85 | 38.46 | 38.54 |
| Short Circuit Current Isc (A) | 12 | 7.26 | 8.57 | 15 | 7.26 | 8.78 | 9.10 | 9.85 |
| Voltage at maximum Power (Vmp) (A) | 17.64 | 30.68 | 30.82 | 17.64 | 35.06 | 31.38 | 31.52 | 31.65 |
| Current at maximum Power (Imp) (A) | 11.35 | 6.54 | 8.14 | 14.2 | 7.15 | 8.29 | 8.54 | 8.75 |
| Hole to hole dimension (mm) (CTC) | X = 945 Y = 740 | | X = 945 Y = 822 | | | | | |
| Module size LxWxH (mm) | 1485 x 982 x 35 | | 1644 x 982 x 35 | | | | | |
| Solar Cell per Module (Units) | 72 | 60 | 60 | 72 | | 60 | | |
| Solar Cell Type (MC) | Multi | | | | | | | Mono |
| Maximum System Voltage (V) | 1000 (TUM) | | | | | | | |
| Arrangement of Cell (L*B) (nos.) | 12 x 6 | 10 x 6 | | 12 x 6 | | 10 x 6 | | |
| Weight (Kg) | 16.8 | | 17.6 | | | | | |
| Junction Box (IP67) | 4 Terminal with 3 bypass diodes (20A) | | | | | | | |
| Tolerance of electrical parameters | ± 3%, Pm Positive Tolerance | | | | | Guarantee & Certifications : Product Warranty : 25 Yrs. | | |
| Temperature Coefficients | | | | | | Performance Guaranteed Power: Output of 90% | | |
| Coefficients of currents a (% °C) | 0.05±0.02 | | | | | for 10 Yrs. & 80% for 25 Yrs. | | |
| Coefficients of currents b (% °C) | -0.35±0.01 | | | | | N/A | | |
| Coefficients of currents c (% °C) | -0.44±0.02 | | | | | N/A | | |
| Maximum System Voltage (V) | 1000 (TUV) | | | | | Packing Information: Quantity/Pallet 2 in 1 | | |
| Temperature Range | -40°C to +85°C | | | | | | | |
| Efficiency Reduction at 200wm2, 25°C | < 5% | | | | | | | |
| Standard Test Condition (STC) | Irradiance 1000Wm ² , Temperature 25°C, AM 1.5 | | | | | | | |
| Mechanical Specification | | | | | | | | |
| Cable & Connections | 4mm2, TUV Certified, 1000mm (Optional) | | | | | | | |
| Application Class | Class A (Safety Class) | | | | | | | |
| Front Cover | High Transmission, Low Iron, Tempered Glass | | | | | | | |
| Cell In capsulate | Ethylene Vinyl Acetate (PID) | | | | | | | |
| Back Cover | Composite Film | | | | | | | |
| Frame | = 17μ Anodize Thickness Aluminium Frame with Twin Profile | | | | | | | |

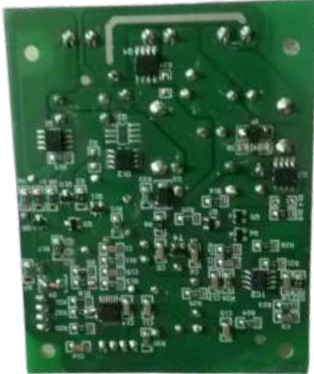
* Pic & Spec can be changed without prior notice.



Technical Specifications : Solar Photovoltaic Modules

| Electrical Characteristics | GE-10Wp | GE-20Wp | GE-40Wp | GE-50Wp | GE-60Wp | GE-75Wp | GE-100Wp | GE-125Wp | GE-150Wp |
|------------------------------------|--|----------------|----------------|----------------|----------------|----------------|----------------|----------------|----------------|
| Peak Power (WP) | 10 | 20 | 40 | 50 | 60 | 75 | 100 | 125 | 150 |
| Open Circuit Voltage Voc (V) | 21.60 | | | | | | | | |
| Short Circuit Current Isc (A) | .78 | 1.28 | 2.41 | 3.06 | 3.54 | 4.59 | 6.22 | 7.45 | 8.72 |
| Voltage at maximum Power (Vmp) (A) | 17.54 | 18 | 18 | 18 | 18 | 18 | 18 | 18 | 18 |
| Current at maximum Power (Imp) (A) | .68 | 1.15 | 2.24 | 2.82 | 3.35 | 4.21 | 5.75 | 6.95 | 8.35 |
| Maximum System Voltage (V) | 600 | | | | | | | | |
| Physical Parameters | | | | | | | | | |
| Solar Cell per Module (Units) | on demand | | | | | | | | |
| Solar Cell Type (MC) | Multi | | | | | | | | |
| Solar Cell Per Module (Units) | 36 | | | | | | | | |
| Arrangement of Cell (L*B) (nos.) | 9*4 | | | | | | | | |
| Weight (Kg) | 1.200 | 2.200 | 3.700 | 4.320 | 4.90 | 6.580 | 8.300 | 9.70 | 11.10 |
| Hole to hole dimension (mm) (CTC) | X=315 Y=145 | X=315 Y=260 | X=645 Y=212 | X=645 Y=267 | X=645 Y=297 | X=645 Y=386 | X=630 Y=505 | X=630 Y=627 | X=630 Y=742 |
| Module Size LxWxH (mm) | 340x295x22 | 525x340x22 | 660x425x38 | 660x535x38 | 660x595x38 | 773x660x38 | 1010x665x35 | 1255x665x35 | 1485x665x35 |
| Measurement Tolerance on power | +/-3%. All electrical parameters specified at: STC: 25°C cell temperature; 1000W/m2 Irradiance | | | | | | | | |
| Other Characteristics | | | | | | | | | |
| Type of Cell | Multi Crystalline Silicon | | | | | | | | |
| Front Face | Tempered Glass (Low Iron), 3.2mm | | | | | | | | |
| Encapsulate | Ethylene Vinyl Acetate (PID) | | | | | | | | |
| Frame | =17μ Anodize Thickness Aluminium Frame with Twin Profile | | | | | | | | |
| Junction Box | IP 65/67, 3 Terminal, 2 Diodes | | | | | | | | |
| Temp. Coefficients of Pmax (%/°C) | -0.45 | | | | | | | | |
| Temp. Coefficients of Voc (%/°C) | -0.35 | | | | | | | | |
| Temp. Coefficients of Lsc (%/°C) | 0.05 | | | | | | | | |

* Pic & Spec can be changed without prior notice.



Technical Specifications : Lanterns & Study Lamps

| Type | Lantern Cool | Lantern Zoya | Study Lamp | |
|------------------|--|--------------------|------------------------|------------------------|
| Lamp Wattage | 3W | 3W | 1W | 0.5W |
| Solar Panel (Wp) | 3 Wp | 3 Wp | 2 Wp | 1 Wp |
| Battery | 6 V, 4.5 Ah | 6 V, 4.5 Ah | Li-ion 3.7V / 2200 mAh | Li-ion 3.7V / 1500 mAh |
| Backup | 6 to 8 hrs | | 8 to 10 hrs | 8 to 10 hrs |
| Lumens/Watt | 110 | | | |
| Idle Current | < 1mA | < 1mA | < 1mA | < 1mA |
| Efficiency | > 91% | > 91% | > 89% | |
| Light Mode | 2 (Hi/Low) | 2 (Hi/Med/Low) | 2 (Hi/Low) | 2 (Hi/Low) |
| Autonomy | Min 2 Days | Min 2 Days | Min 1 Days | Min 1 Days |
| Protection | No Load Protection Battery Overcharge & Deep Discharge Protection Short Circuit Protection Battery Reverse Polarity / Reverse Flow Protection | | | |
| Frame | Strong ABS Plastic | Strong ABS Plastic | Strong ABS Plastic | Strong ABS Plastic |
| Application | Studying & Home | | | |
| Product Warranty | 1 Year warranty complete system (Battery warranty 180 days) / ** | | | |

** More than 1 year warranty on customers demand



* Pic & Spec can be changed without prior notice.

Our Solar Product



Our Solar Product

